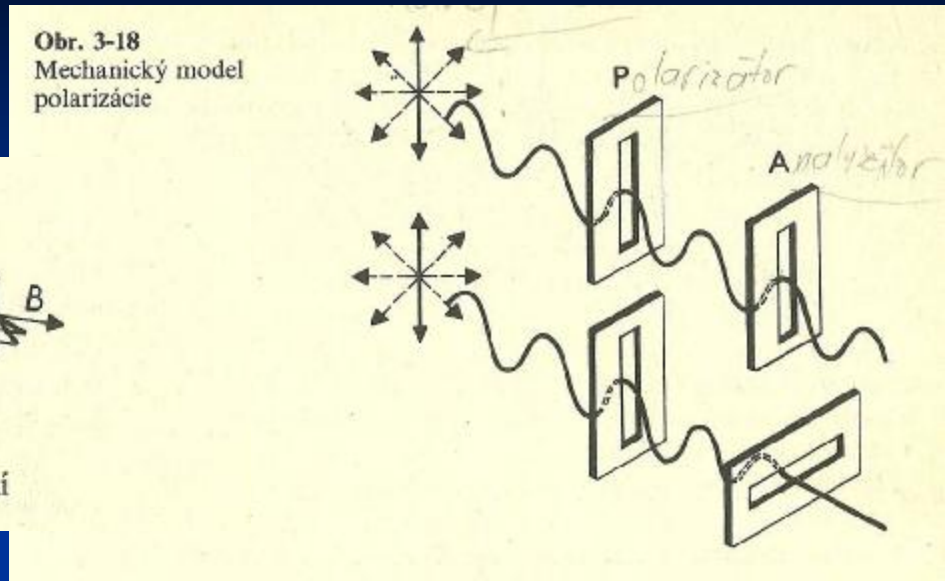
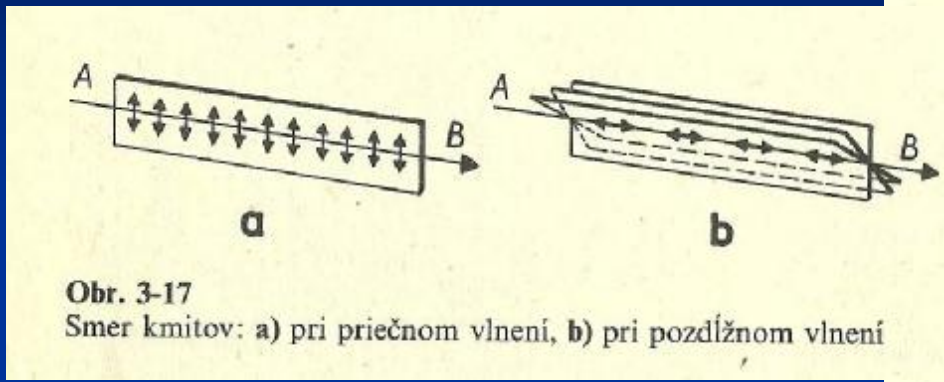
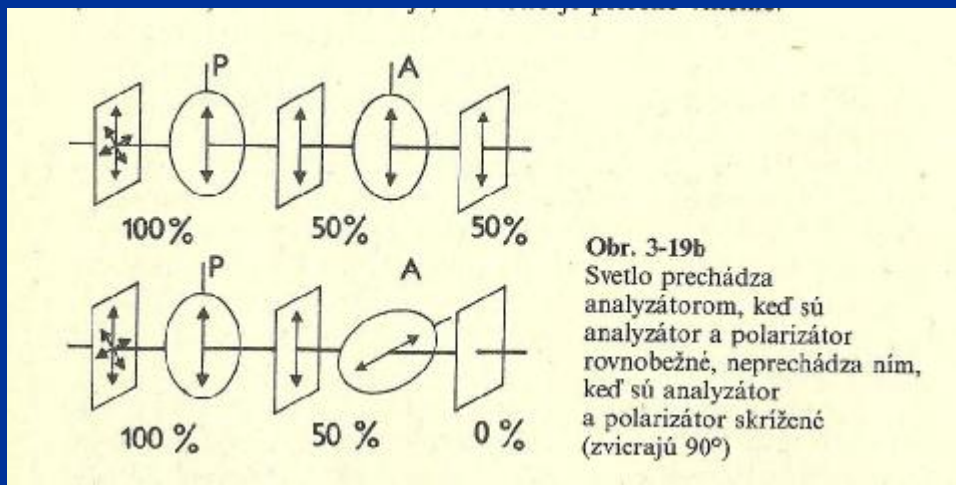


Polarization

Light - transverse waves or longitudinal waves



P – polarizer (incident unpolarized waves are polarized and polarized waves are passing through it), A - analyzer

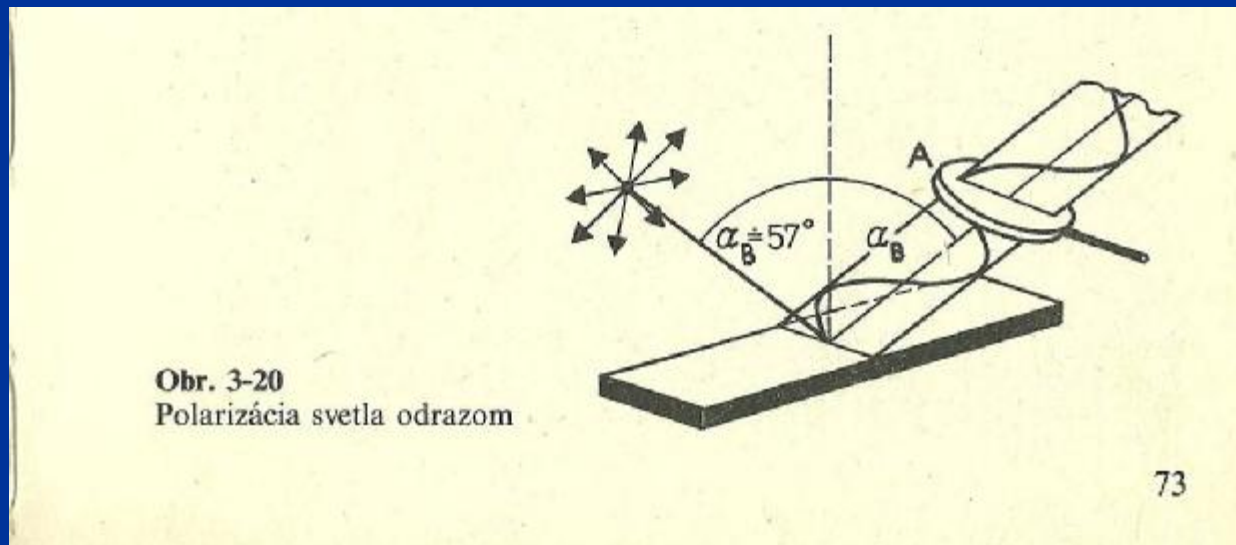


Light is a transverse wave.

Linear polarized light – vector of strength of light oscillates in the perpendicular plane to the direction of the wave.

•Polarization of the light by reflection:

Brewster angle – light is partially polarized (unpolarized wave + linear polarized wave of light)



Polarization of the light by double reflection:
Icelandic limestone (anisotropic medium – speed of light changes according to the direction)

