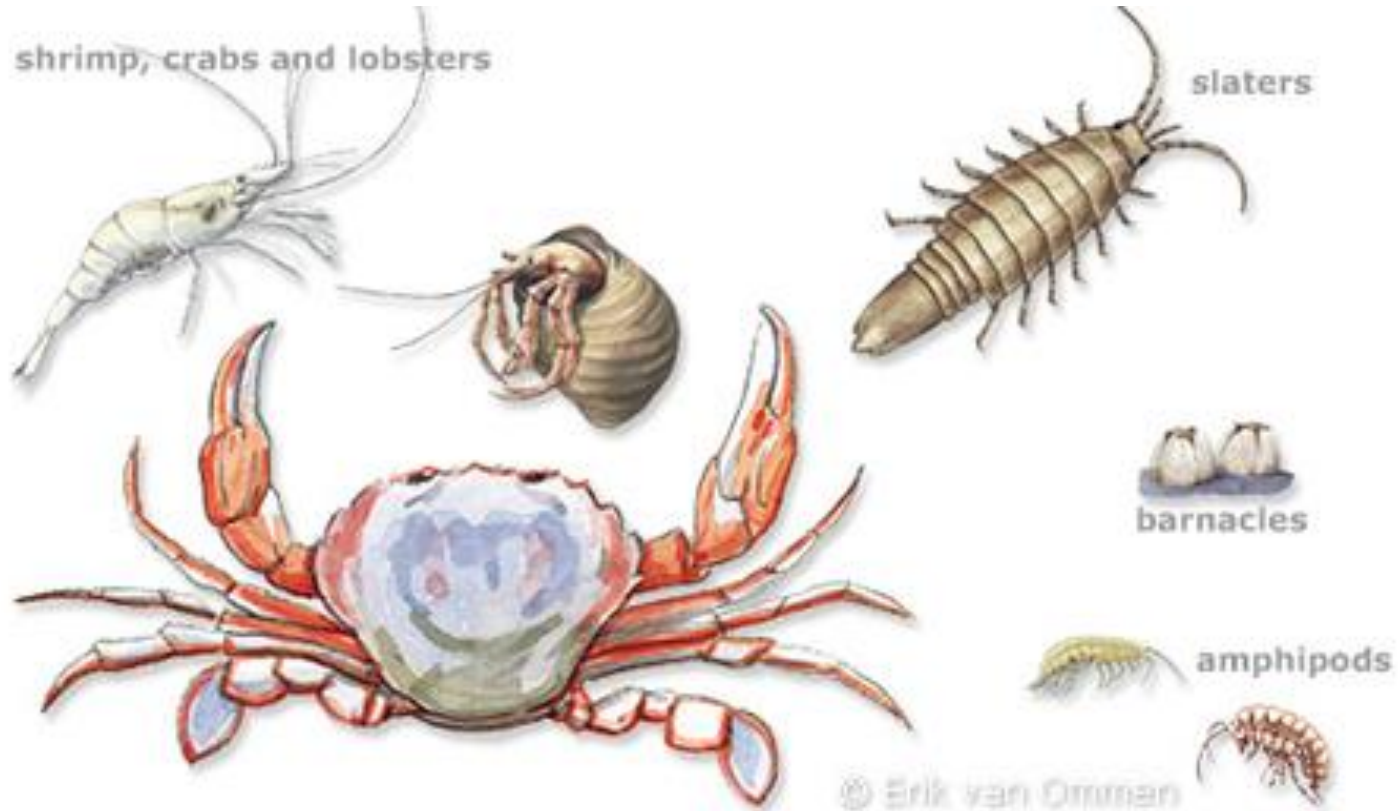




Kôrovce

Subphylum Crustacea

Crustacea (kôrovce)



General characteristics

- **marine members** include shrimp, lobster, copepods, barnacles, & crabs
- **terrestrial crustaceans** called isopods include pillbugs & sowbugs
- **freshwater members** include crayfish & Daphnia (water fleas)

- all have jaws known as **mandibles** for chewing or tearing
- **cephalothorax & abdomen**
- **10 pairs** of jointed appendages
- breathe through **gills**

Barnacle (fúzonôžky)

- marine
- sessile crustaceans that live in limestone case
- filter plankton with 12 appendages called cirri





Isopods

- live **on land in dark places**
- have 7 pairs of legs on a segmented body
- can **roll into a ball** for protection
- **pillbugs & sowbugs**

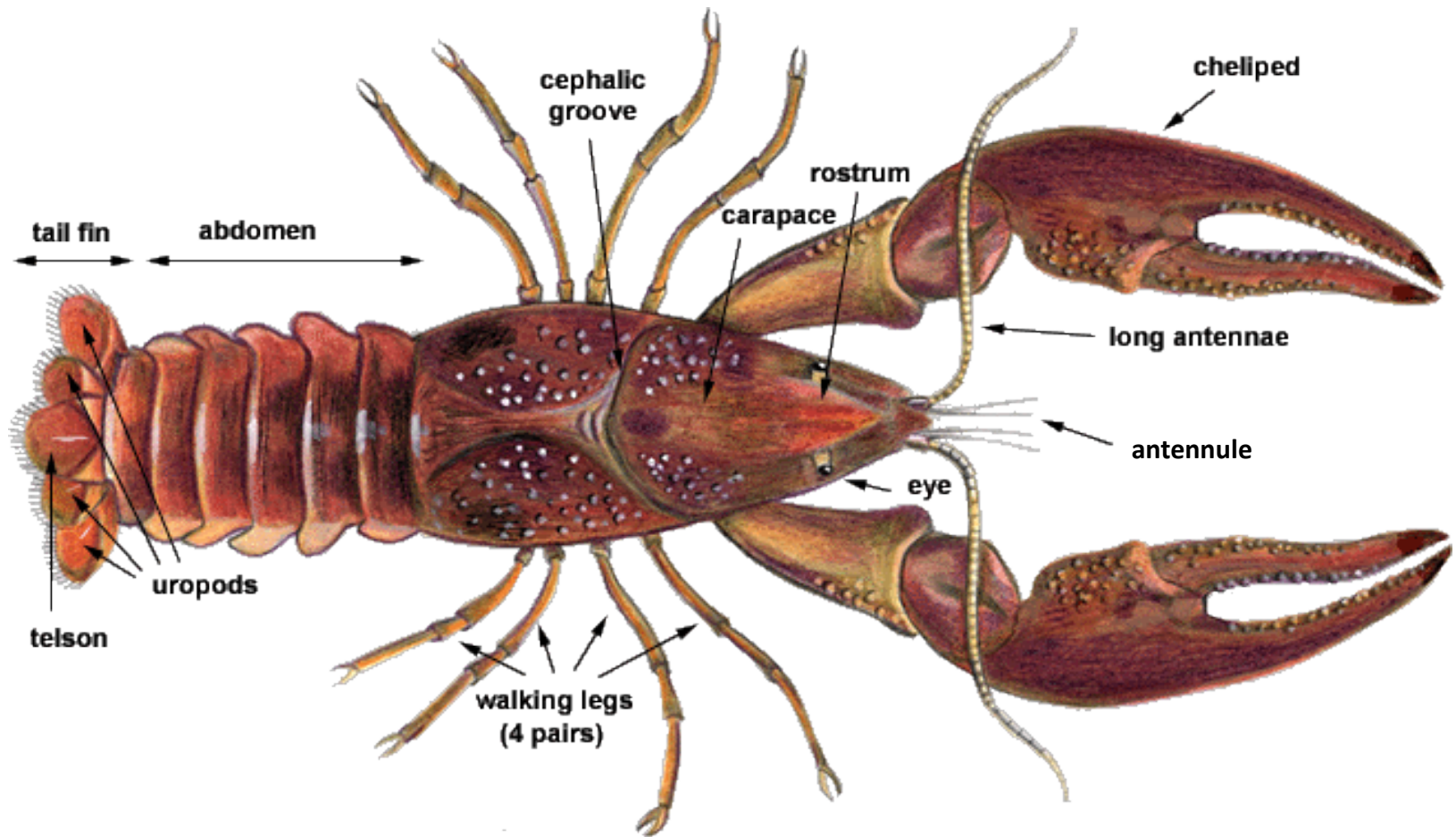


pillbug

Crayfish (sladkovodný rak)

- cephalothorax made of 13 fused segments & covered by protective **carapace**
- **antennules** - located on head help in balance, touch & taste
- **statocysts** - balancing organs at the base of antennules
- **antenna** - on head used for touch & taste
- **maxillae** - paired mouthparts that move side to side to tear food
- **chelipeds** - claws used to capture food & for protection
- **mandibles** - jaws that move up & down to crush food
- **walking legs** - 4 pairs used for movement
- **swimmerets** - under abdomen to swim, gas exchange, & protect eggs/young
- abdomen ends in flat segment called **telson** with flat **uropods** on each side

Crayfish (sladkovodný rak)



Crayfish (sladkovodný rak)

- **compound eyes** on stalks
- chitinous teeth in stomach grind food
- wastes leave through anus
- **green glands** filter wastes from blood & help with salt balance
- **open circulatory system** with heart to pump blood to gills & body cells
- **gills** attached to walking legs
- **gonochorists** - separate sexes that mate in fall & sperm stored in seminal receptacle
- eggs attach to swimmerets of female & hatch in several weeks

Copepods (kladonožci)

- largest group of crustaceans
- make up most of the **marine plankton**
- serve as **food for many marine animals**
- found in **freshwater, marine and moist terrestrial environments**

