

Animalia

Phylum Echinodermata ()

General characteristic

-
-
-
-
-
-

Classes of Echinodermata

Holothuroidea

Crinoidea

Echinoidea

Asteroidea

Digestive system

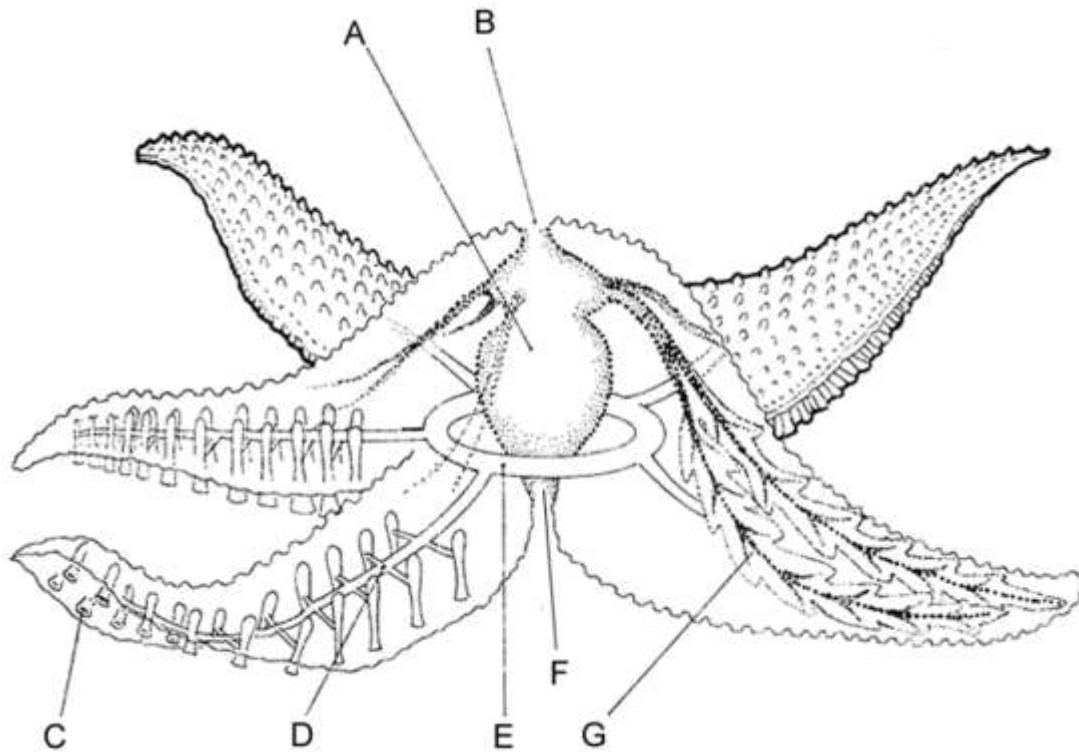
Respiratory system

Circulatory and excretory system

Nervous system

Musculoskeletal system

Reproductive system



1. The anus is found on the top of a starfish, this is where wastes are removed. _____
2. The mouth is on the opposite side of the anus, food is taken in here: _____
3. Large and centrally located between the mouth and anus is the stomach, where food is digested: _____

4. The ring canal surrounding the stomach, part of the starfish's water vascular system: _____

5. The radial canal extends from the ring canal and into the starfish's arms, also part of the vascular system: _____

6. Attached to the radial canal are the tiny tube feet with suckers: _____

7. Digestive glands are located within the arms of the starfish, chemicals help break down food: _____

Ecology of Echinodermata