

## 39. Europe – fauna and flora

Flora (vegetation) and fauna (animals) are *as diverse as climatic conditions* => many different species in every climatic zone of Europe.

### Vegetation cover

#### Polar climate

- *Tundra* = eternal ice, mosses and lichens, dwarfy willows and pines
- *Taiga* = boreal forest, i.e. firs, spruces, pines, larches

Taiga is the *transition zone* between the polar and continental temperate climate.

#### Temperate climate

- *Mixed forest* = mixed species of coniferous and deciduous trees
- *Deciduous forest* = maples, limes, oaks, beeches, chestnuts
- *Grasslands* = grass which height depends upon received precipitation

#### Subtropical climate

- *Subtropical woodland* = semiarid, plenty of scrubs/shrubs, small pines, xerophytic plants, pyrophytic plants, wild olives, cork oaks, cedars

### Animal life

#### Polar climate

- *Tundra* = polar rabbits, polar foxes, polar bears, seals, buck caribou
- *Taiga* = squirrels, owls, lynxes, wolves, salmon

#### Temperate climate

- *Mixed forest* = species of coniferous and deciduous forests
- *Deciduous forest* = brown bears, wild boars, chamois, trout
- *Grasslands* = rodent species, pheasants, various bird species

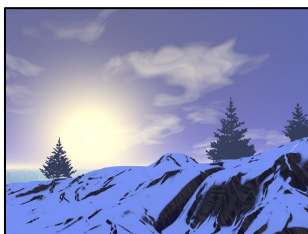
#### Subtropical climate

- *Subtropical woodland* = lizards, sea-gulls, mouflons, chameleons

### Keywords

vegetation and animals of polar, temperate (continental and maritime) and subtropical climate, tundra, taiga, deciduous forests, Mediterranean woodland

**Tundra**



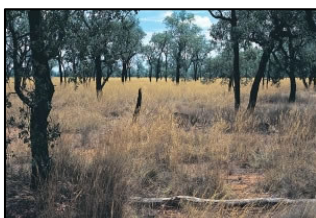
**Taiga**



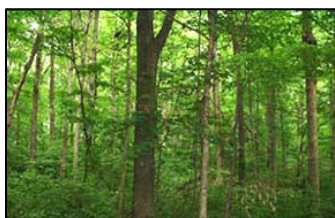
**Grassland**



**Subtropical semi-arid  
woodland**



**Deciduous forest**



**Buck caribou**

