

Animalia

## Phylum Mollusca ( )

### General characteristic

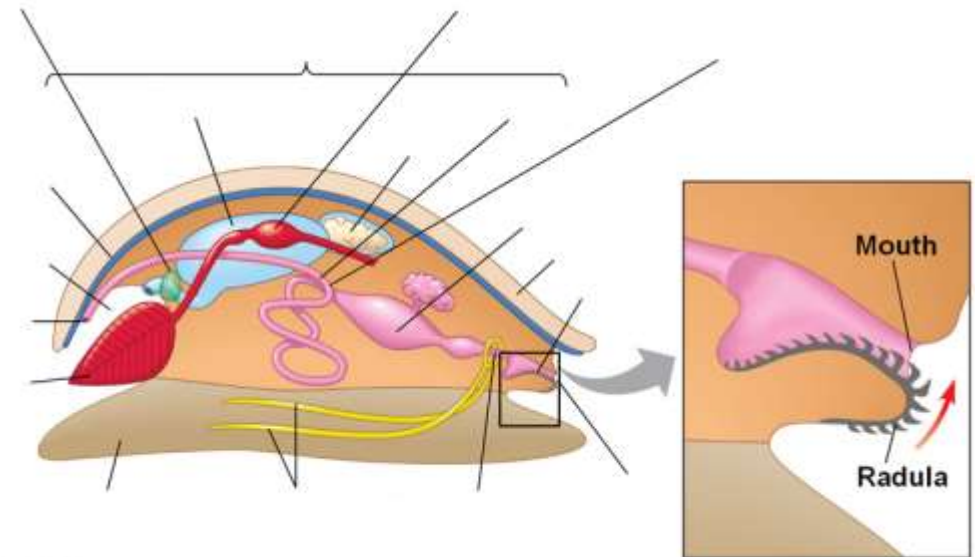
- 
- 
- 
- 
- 
- 
- 
- 

### Gastropoda

### Bivalvia

### Cephalopoda

### Structure of Mollusca



Digestive system:

Excretory system:

Respiratory system:

Circulatory system:

Animalia

Nervous system and senses:

Reproduction:

**Ecology**