

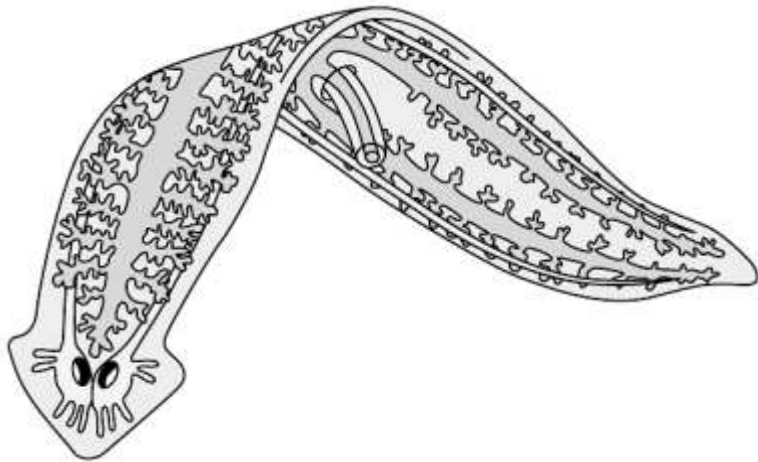
Animalia

Phylum Platyhelminthes ()

General characteristic

-
-
-
-
-
-

Structure of Planaria *(describe the picture)*



Turbellaria (Planaria)

Nervous system and senses:

Digestive system:

Excretory system:

Locomotion (movement):

Reproduction:

Animalia

Cestoda (tapeworms)

(write main characteristics and draw the main structure of tapeworm)



Trematoda (flake)

-
-
-
-
-
-