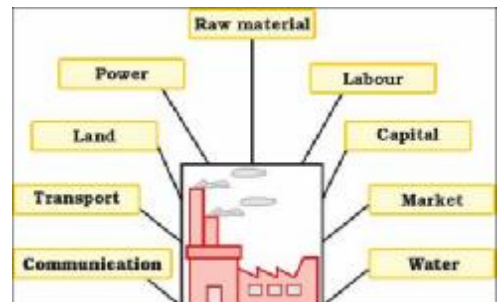


# 13. Locational Factors of Industry

What do you think? Which areas are the most advantageous for building a new factory in Slovakia?

When we want to locate an object of industry we should know where to save up the money (inputs). The companies or enterprises are located in the *place of resources* (raw materials, water, people etc.) or in the *place of sale*.

Locational factors are conditions of an area influencing the industrial development.



## 1. Natural resources and raw materials

- wood processing, e.g.:  
.....
- food-processing industry, e.g.:  
.....
- oil refinery, e.g.:  
.....
- construction materials, e.g.:  
.....

## 2. Water supplies

What are the largest dams in Slovakia?

Water is very important factor in industry manufacturing. Do you know why?

There are 2 important aspects of water: amount and quality

- chemical ind., e.g.:  
.....
- metallurgy, e.g.:  
.....
- paper and cellulose, e.g.:  
.....
- energy and fuels, e.g.:  
.....
- food-processing, e.g.:  
.....
- textile and garment ind. e.g.:  
.....

## 3. Energy

The main factor for location of industry.

Why??? What types of energy are used in industry in Slovakia?

## 4. Workforce

4 important aspects: number of potential workers, labour quality, price/value of workers, gender (somewhere are required women and somewhere men)

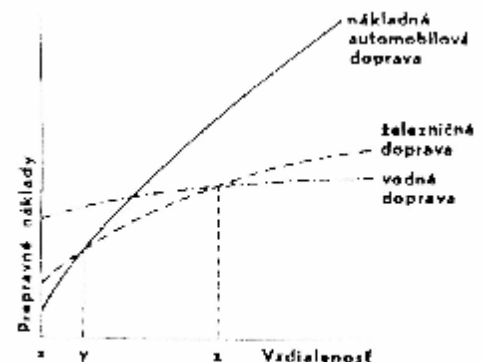
The pattern:  
.....  
.....

Give 2 examples of foreign investors:

## 5. Transportation costs and infrastructure

There are very important aspects like: density of transport network, quality.

The pattern:  
.....



Grat 2. Prepravné náklady v rôznych druhoch dopravy  
Tuzov, Bratislava, 4., 1983

## 6. Industrial agglomeration – industrial zone

More industrial objects cluster in smaller areas typical for natural cooperation. The whole area is continued by infrastructure network. It's very advantageous to be located in the central industrial area to cooperate with other enterprises, to be close to them. There is the possibility to save up the money of transport = time.

Negative: pollution

**Do you know any industrial zone?**

## 7. Government subsidy

- state investment support in the regions (districts) with long-term high unemployment
- useful regional programs of multinational organizations e.g. EU, V4

**Homework:**

*Choose one Slovak company and analyze its advantages and disadvantages according to the location.*

**Task:**

*Match the following:*

A = Kia	1 = closeness to coal
B = US Steel	2 = timber
C = aluminium factory	3 = labour
D = sawmill	4 = lot of electricity

## Keywords

location, logic, input/output, enterprise, company, factory, labour, transport, energy resources, fuels, locational factor, effectiveness, place of sale, aspect, labour, infrastructure, support, investment, resolution, multinational